

***Guideline for
Unique identification of products with
SGTIN (serialized GTIN).
Labelling with GS1 Datamatrix
barcode and tagging with EPC / RFID
Gen 2 UHF RFID tags***

Release 1.1 - 27. June 2018



Document information

Document	
Document name	Guideline SGTIN and RFID
Document date	1 June 2018
Document version	0.9

Contributors to the document

Name	Organisation
Geir Vevele	ACT Logimark AS
Birger Hodt	Draka Norsk Kabel
Anders Bru	Glamox
Egil Wist	GS1 Norway
Geir Paulsen	GS1 Norway
Knut Mathisen	GS1 Norway
Knut Vala	GS1 Norway
Roar Lorvik	GS1 Norway
Terje Menkerud	GS1 Norway
Øivind Pettersen	Skanska
Frode Mohus	Statsbygg
Inge Aarseth	Sykehuset i Vestfold, Tønsberg project
Bengt Herning	Virke

Log of changes

Release	Date of changes	Changed by	Summary of change

Table of Contents

1. Background	4
2. Purpose and application for unique ID and labelling / tagging of products ..	4
3. Allocation of SGTIN (Serialized GTIN)	4
3.1 Subscription of GS1 Company Prefix (GCP).....	4
3.2 Allocation of GTIN and serialization.....	4
3.3 Use of GS1 AIs for Application Identification	5
3.4 Structure of GTIN and SGTIN in a barcode and EPC / RFID Gen 2V2 RFID tag	6
4. Labelling of GS1 Datamatrix 2D barcode.....	8
4.1 GS1 Datamatrix 2D barcode	8
4.2 Size of the barcode.....	8
4.3 Quality of the barcode and desired length of life.....	9
4.4 Placement of the barcode on the product	9
4.5 Readability of the barcode	9
5. Tagging with EPC / RFID Gen 2 UHF RFID chip.....	9
5.1 Structure / content in the RFID chip	9
5.2 Enhanced User Memory.....	12
5.3 Alternative types of RFID tags	12
5.4 The length of life of the RFID chip	13
5.5 Placement and fastening / mounting of the RFID tag	13
5.6 Security / Encryption of content in the RFID tag	13
6. Data capture	14
6.1 Data capture using Datamatrix barcode readers	14
6.1.1 Datamatrix reading equipment	14
6.1.2 Reading distance	14
6.2 Data capture using RFID readers.....	14
6.2.1 RFID readers and equipment.....	14
6.2.2 RFID Software Solutions.....	14
7. Testing RFID solutions.....	15
7.1 Readability of RFID tagged objects	15
7.2 Reading distance from RFID antennas to RFID tagged objects.....	15
8. Check list for manufacturers and suppliers.....	16
9. Information about GS1	16
10. References and glossary:.....	17

1. Background

Several of the actors in the Building, Construction and Facility Management sector has given GS1 Norway the task of developing a Guideline for unique identification and labelling / tagging of products, including the use of GS1 Datamatrix barcodes and RFID. The principals are Sykehuset i Vestfold / Tønsberg project and Statsbygg. GS1's open international standards shall be used for the tasks covered in this Guideline.

This Guideline contains the primary activities and instructions for assigning and proper use of SGTIN (Serialized GTIN). In addition, it is explained how labelling with GS1 Datamatrix barcode and tagging with GS1's standard for EPC / RFID Gen2 UHF RFID chips should be conducted by a manufacturer / supplier for its products. More information about EPC / RFID Gen2 is in the Reference list in chapter 10.

Products exist in numerous variants regarding shape, size and performance. Thus, this Guideline provides only general instructions. This Guideline provides advice and tips that are useful to take into consideration when identifying and labelling / tagging products.

2. Purpose and application for unique ID and labelling / tagging of products

Unique identification and labelling / tagging of products is a very important and prioritized area for the Building, Construction and Facility Management sector. The purpose of unique identification and labelling / tagging is to ensure that product and information flow in value chains become easier, faster and safer, thus contributing to effective construction site logistics as well as Management, Repair and Operations (MRO). This will result in reduced costs for all actors in the value chain.

Unique identification and labelling / tagging shall be used by manufacturers and suppliers of building and construction products, and must be used throughout the value chain for efficient logistics and traceability of products and deliveries. Suppliers must therefore take actions and apply solutions that enable them to label their products according to GS1's standards for identification, labelling / tagging and traceability.

3. Allocation of SGTIN (Serialized GTIN)

3.1 Subscription of GS1 Company Prefix (GCP)

The allocation of SGTIN requires a subscription of GS1 Company Prefix (GS1 GCP). This allows for unique identification of products. When applying for a GS1 Company Prefix (GCP) from GS1 Norway, unless otherwise specified, you will receive a GS1 GCP with a capacity based on the information given in the application form. This does only apply to the number of different products, not identical products of the same kind. Different units of the same identical product are identified with serial numbers. This may be different at other GS1 offices in other countries.

For more information about application of GS1 GCP from GS1 Norway, see the Reference list in chapter 10.

3.2 Allocation of GTIN and serialization

A product, for which it is required to know predefined information, has to be uniquely identified to make this possible. For this purpose, GTIN (Global Trade Item Number) is used.

Identification and labelling / tagging of products enable automation of processes such as production, inventory management, shipping and goods reception. This is also used for internal logistics at construction site, for assembly and in Management, Repair and Operation (MRO) throughout the life time of the building.

It is the individual manufacturer or brand owner who is responsible for subscribing to a GS1 Company Prefix and assign GTIN to their products. GS1 has guidelines that help avoid duplicates and reuse of GTINs. Each product that is different from another in design and / or content is assigned a unique GTIN. This remains the same as long as the product exists. The same GTIN is assigned to all identical products.

The Serialized Global Trade Item Number (SGTIN) is an add-on to GTIN that allows you to individually identify different units of the same product. A GTIN itself does not provide unique identification of each unit of a product because it does not uniquely identify each instance of a physical object.

GTIN identifies a specific group of identical products (single SKU), while SGTIN identifies each unit of identical products using serial numbers.
E.g. a light fixture has a GTIN, and to distinguish between two identical light fixtures, they must have their own SGTIN.

There is a set of rules and regulations (GS1 GTIN Management Rules) for how to manage GTINs. When making changes to a product this would in many cases lead to the assignment of a new GTIN. Also, it is forbidden to reuse a GTIN previously used, even if that product is no longer available.

3.3 Use of GS1 AIs for Application Identification

GS1 Application Identifiers (AI) are numeric prefixes used in barcodes and EPC / RFID tags to define the meaning and format of information elements. The use of AI's makes it possible to distinguish different information elements from one another in a barcode or EPC / RFID tag. In the human readable text underneath the barcode, these appear as parentheses and the content of the individual AI follows. In an EPC / RFID tag, an AI is used to identify what information is entered into the chip's user memory. A GS1 approved barcode or an EPC Gen2 RFID chip is required for the use of AI's.

For example, AI240 (Additional Data ID) can be used for TFM number ¹

GS1 has defined over 100 Application Identifiers (AI's). Each Application Identifier is by default a two, three or four-digit number. For the full list of GS1 Application Identifiers and their definitions, see section 3.2 of the GS1 General Specification. For more information, see the Reference list in Chapter 10.

GS1 Datamatrix barcode:

When using GTIN and SGTIN together with a 2D barcode, it is the GS1 Datamatrix barcode symbology that shall be used. This requires the use of AI's (Application Identifiers). These are used for the systems to understand which information elements are contained in the barcode.

EPC Gen2 RFID tags:

The information in an AI is stored in EPC User Memory of the RFID tag, together with the information element (i.e. batch / lot no.). The software application will then be able to extract the right information elements from User Memory.

¹ See more info about TFM number here

http://www.statsbygg.no/files/publikasjoner/prosjekteringsanvisninger/0_Generelle/PA_0802_Tverrfaglig_merkesystem.pdf

3.4 Structure of GTIN and SGTIN in a barcode and EPC / RFID Gen 2V2 RFID tag

The structure of the GTIN content is slightly different depending on whether it should be placed in a GS1 Datamatrix barcode or in an EPC RFID tag. Common to both is the GS1 Company Prefix with country code and Item Number assigned to each product by the manufacturer.

Here is the structure of the GTIN content in a barcode:



If you are using SGTIN, AI (Application Identifier) 21 is used to register the serial number. This is explained in chapter 4.1. Serial number cannot exceed 20 digits / alphanumeric characters

In an RFID tag, only SGTIN (not GTIN without serial number) is used

In a barcode, you can have up to 20 alphanumeric characters in the serial number. If you are using the SGTIN-96 in an RFID chip, you have a restriction. The serial number must be numeric and cannot exceed 12 digits, with 274,877,906,943 as the highest value. Therefore, it is important to relate to the limitations in the RFID chip when allocating serial numbers and not use alphanumeric characters or exceeding the maximum allowable value. If you need alphanumeric characters in the serial numbers, SGTIN-198 must be used. This means that you must use RFID tags with higher capacity in the EPC memory, than if you use the SGTIN-96. The SGTIN-96 is sufficient if you only have digits, and not alphanumeric characters in the serial number.

Data structure SGTIN-96		
EPC SGTIN-96	Value (decimal)	Comment
Header	48	Number for SGTIN-96
Filter value	1, 7*	1 = Consumer Unit (CU) - (installed product) (POS Trade Item) 7 = Unit inside a Consumer Unit (CU) that is not intended for individual sales
Partition	3, 5 or 6	3 = GS1 GCP of 9 digits and 4 digits in indicator + item number 5 = GS1 GCP of 7 digits and 6 digits in indicator + item number 6 = GS1 GCP of 6 digits and 7 digits in indicator + item number Check digit is removed from GTIN-13 and a 0 (zero) is entered in front of the item number For GTIN-14 the check digit is removed and indicator (extension digit) is entered in front of the item number.
GS1 Company Prefix (GS1 GCP)	N..9	GS1 GCP; 6, 7, or 9 digits
Item number	N..7	Depending on the number of digits in GS1 GCP. 3, 5, or 6 digits
Serial number	N..12	Up to 12 digits (highest allowable value = 274,877,906,943) A fixed number of digits is chosen for serial number, it must not be 12 digits. You choose as many as needed. Leading zero is not allowed
*Other filter values exist, but they are not relevant for this Guideline		

Data structure SGTIN-198		
EPC SGTIN-198	Value (decimal)	Comment
Header	54	Number for SGTIN-198
Filter value	1, 7*	1 = Consumer Unit (CU) - (installed product) (POS Trade Item) 7 = Unit inside a Consumer Unit (CU) that is not intended for individual sales
Partition	3, 5 or 6	3 = GS1 GCP of 9 digits and 4 digits in indicator + item number 5 = GS1 GCP of 7 digits and 6 digits in indicator + item number 6 = GS1 GCP of 6 digits and 7 digits in indicator + item number Check digit is removed from GTIN-13 and a 0 (zero) is entered in front of the item number For GTIN-14 the check digit is removed and indicator (extension digit) is entered in front of the item number.
GS1 Company Prefix (GS1 GCP)	N..9	GS1 GCP; 6, 7, or 9 digits
Item number	N..7	Depending on the number of digits in GS1 GCP. 4, 6, or 7 digits
Serial number	X..20	Up to 20 alphanumeric characters. A fixed number of digits is chosen for serial number, it must not be 20 characters. You choose as many as needed. Leading zero is not allowed
*Other filter values exist, but they are not relevant for this Guideline		

Example of a GS1 Datamatrix barcode with GTIN and additional information:



(01) 0 7332402 26591 0
 (21) 1234567890
 (240) +A01=442.001-UP001T
 (91) 456498765498765465432132168753

AI 01 = GTIN
 AI 21 = Serial number
 AI 240 = Additional ID for product, used here for TFM number
 AI 91 = Corporate Internal Information, used here for GUID

The GTIN in this example consists of 07332402265910²
 0 = Indicator (GTIN-14 extension digit)
 73 = Country Code (In this example Sweden. Norway has 70)
 32402 = GS1 Company Prefix (In this example Glamox AB)
 26591 = Item number (the number Glamox has given this item)
 0 = Check digit (calculated with Modulus 10 based on the previous 13 digits)

² The GTIN contains no spaces. In the example next to the barcode, the spaces is for the sake of readability.

Contact your system integrator to assist you, in setting up the system for identification and labelling with barcodes and programming of RFID tags.

Example of data string in an EPC / Gen2 RFID chip:

urn:epc:tag:sgtin-96:1.7332402.026591.1234567890

The data string consists of:

urn:epc:id = URI (Uniform Resource Identifier)

sgtin-96 = GS1 ID key

1 = Filter value (in this example Consumer Unit (CU))

7332402 = GS1 GCP (GS1 Company Prefix)

023591 = Indicator and Item number

1234567890 = Serial number

The partition value indicates where the . (dot) should be placed and split the string between GCP and item number.

The Check digit is not included in the EPC code in an RFID tag

A new . (dot) distinguishes between the GTIN and the Serial number

The additional information in the barcode is placed in the User Memory in the RFID chip and appears as follows:

AI 240 - ADDITIONAL ID 442.001-UP00

AI 91 - INTERNAL 3vHSn0oT0Hsm00051Mm0081T

4. Labelling of GS1 Datamatrix 2D barcode

4.1 GS1 Datamatrix 2D barcode

When using GTIN and SGTIN together with a 2D barcode, the GS1 Datamatrix barcode symbology shall be used.

This requires the use of AI's (Application Identifiers). These are used for the systems to understand which information elements are contained in the barcode when you have more information elements in the same barcode.

There are other types of 2D barcodes, e.g. QR. We recommend using GS1 Datamatrix, this is a more robust code and has more error correction. The GS1 Datamatrix is also more suitable for DPM (Direct Part Marking).

It is important that the barcode you use is a GS1 barcode. This applies regardless of whether you use GS1 QR or GS1 Datamatrix. There is a difference between QR and GS1 QR, and between Datamatrix and GS1 Datamatrix. If you do not use GS1 barcodes, the data content will not be interpreted correctly, and the use of Application Identifiers will not be possible.

SGTIN is achieved by using GTIN and serial number.

The AI's are the numbers seen in the parenthesis next to the barcode. These numbers are also in the barcode itself, while the parenthesis is there just for ease of readability. The parenthesis is not present in the barcode.

4.2 Size of the barcode

The physical size of the barcode varies with the amount of information contained in it. The barcode resolution (X-dimension) must be at least 0.38mm and maximum 0.45mm

4.3 Quality of the barcode and desired length of life

2D barcodes are verified according to the ISO / IEC 15415 standard. This is an international standard that describes the quality of barcodes and how easily readable they are. Highest grade is 4.0/20/660. The minimum requirement is 1.5/20/660. The numbers indicate; quality character / aperture / wavelength of the light that illuminates the barcode.

The length of life of a barcode depends on the type of label material used and where / how the label is placed on the product. Label material must be chosen that has at least as long length of life as the estimated durability of the product to be labelled and the label must be placed where it will not be exposed to physical damage of the barcode.

In buildings where Virkon S³ is used, typically health, food industry and aquaculture, labels and RFID tags included glue, must withstand the use of Virkon S.

4.4 Placement of the barcode on the product

If the barcode is normally used after assembly of the product, it should be placed in a way to make it readable without the need to disassemble the product. The barcode must be placed in such a way that it is not exposed to external abuse which may cause it to be damaged. Should the barcode be used for MRO, it should be placed in such a way that it will not be coated by paint or similar or otherwise covered to make it unreadable.

4.5 Readability of the barcode

The readability of the barcode is dependent on barcode size, type of barcode reader, and distance from barcode to barcode reader. If the requirements of section 5.2 and 5.3 is met, this is according to industry standard and barcodes are readable at normal distance with normal equipment.

5. Tagging with EPC / RFID Gen 2 UHF RFID chip

5.1 Structure / content in the RFID chip

This Guideline is based on EPC / RFID Gen2 Radio protocol that specifies physical data transfer between an RFID chip and an RFID reader with commands for controlling the RFID reader relative to the RFID tags. EPC / RFID Gen2 is an ISO standard and covers functionality such as security and extended user memory.

GS1 has published TDS (Tag Data Standard) that defines the EPC code and link to the various GS1 identification standards, such as GTIN. TDS specifies the data content in EPC Gen2 RFID tags. It is fully possible to use EPC / RFID Gen2V1.2.0 and EPC / RFID Gen2V2 in the same system. For more information, see the Reference list in chapter 10.

The RFID tags content can be created from, for example, a GTIN. The serial number is the only element missing when you already have a GTIN. This can either be created entirely independently of the existing information architecture of the manufacturer. Or based on continuation of numerical or alphanumeric existing serial numbers that, together with GTIN, become a globally unique SGTIN. See example in the table below:

³ Find more information about Virkon S here
<http://virkon.com/products-applications/disinfectants/virkon-s/>

Typical new serial number:

Elements		Example	
GTIN serial number	1234567891234 (GTIN-13) i.e. GS1-128 or GS1 Datamatrix (01)1234567891234	Serial number = [previous] +1 = 2	
Pure Identity	urn:epc:id:sgtin:1234567.089123.2		A full independent ID representation where all barcodes, RFID tags, GS1 Datamatrix codes and similar can be programmed and read from.
PureID -> RFID	TAG SIZE = size of memory of the tag. Usually 96 bit, but sometimes more.		The RFID tags need the following additional information to convert to what's actually inside an RFID chip (1's and 0's)
RFID	30144B5A1C5708C000000002		(96 bit RFID tag with the value 2 in the serial number)

Typical conversion from existing serial number with numeric content:

Elements		Example	
GTIN serial number	1234567891234 (GTIN-13) i.e. GS1-128 (01)1234567891234	Serial number 12334	Typical new serial number, possibly existing alphanumeric number.
Pure Identity	urn:epc:id:sgtin:1234567.089123.12334		A full independent ID representation where all barcodes, RFID tags, GS1 Datamatrix codes and similar can be programmed and read from.
PureID -> RFID	TAG SIZE = size of memory of the tag. Usually 96 bit, but sometimes more.		The RFID tags need the following additional information to convert to what's actually inside an RFID tag (1's and 0's)
RFID	30144B5A1C5708C00000302E (96 bit and 12334 in the serial number)		

identifiers for the product. It must be programmed in the control section of the RFID tag that User Memory is used. This is done by the application that is used to program the RFID tags.

There are currently RFID tags with User Memory up to 32kb, which is relatively much storage. If a lot of data is to be read by the RFID reader from an EPC Gen2 RFID tag, this may affect reading time. It must therefore be tested to quality assure functionality. This is important in use cases where multiple objects tagged with RFID are to be read at the same time.

The RFID tag information content in User Memory may be updated after assembly of the product. For more information, see the Reference list in chapter 10.

5.2 Enhanced User Memory

EPC Gen 2V2 contains Enhanced User Memory and has 16 alternative custom features that are associated with the RFID chip itself. Choosing the different options also affects the price of the RFID Chip / Tag. For example, it may be necessary to store more information in User Memory in an improved way, but where encryption is not required. In essence, Enhanced User Memory has the following main functionality compared to regular User Memory:

- The RFID chip User Memory is divided into several areas
- Access rights are controlled by means of read, write and lock for each file.
- Electronic maintenance log

User memory is used to enter required additional information. The information can be inserted into the tag at any time, either in production, assembly or in a maintenance / operational situation. Examples of information that can be entered are: TFM, GUID or any other desired information. You must use a defined GS1 application identifier (AI) to add structured information into User Memory.

5.3 Alternative types of RFID tags

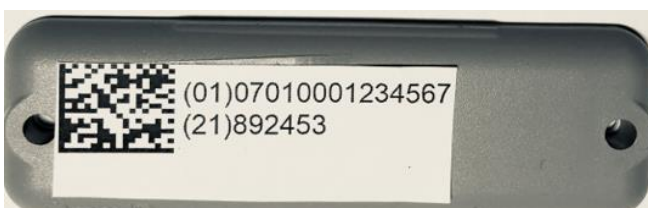
There are many different suppliers of UHF RFID tags on the market and for various purposes. An important component of an RFID tag is the microprocessor (Chip). For example, there are special RFID tags suitable for attachment on metal surfaces.

For Building, Construction and Facility Management, there will be a need for UHF RFID tags that can:

- be attached to different kind of metal surfaces
- be attached to glass surfaces
- be embedded inside concrete structures or attached on concrete surfaces
- be inserted in door-, window frames, etc.

An RFID tag is affected by the material on which it is attached and the materials it is surrounded by. The RFID tags selected must be adapted to the product the RFID tags are to be attached to.

There are several RFID tag suppliers that specialize in solutions for Technical Industries. For Building, Construction and Facility Management, it will be appropriate to attach a label containing a GS1 Datamatrix barcode to the RFID tag itself where this is possible. This may require the design of the chip to ensure satisfactory readability of the barcode.



* This RFID tag has a label with a GS1 Datamatrix 2D barcode attached to it.

5.4 The length of life of the RFID chip

Passive RFID tags have a standard lifetime limitation of 50 years. If the RFID tag is reprogrammed the length of life is expanded with another 50 years. This is related to the characteristics of Flash Memory and its ability to store information.

5.5 Placement and fastening / mounting of the RFID tag

The manufacturer or supplier must label / tag the products, and it is important that they know the scope of the products to determine how the labelling / tagging is to be performed.

If the item's RFID tag is readable through the packaging, the packaging is labelled with barcode only.

If the item's RFID tag is not readable through the packaging, external packaging must also be tagged with an RFID tag. This also applies if it is a multi-pack and all items cannot be read through the packaging. This must be tested by the manufacturer / supplier before the products are shipped to the customer.

It is important to test readability to ensure that surrounding metals or other objects will influence the reading and cause problems.

The RFID tag with the GS1 Datamatrix barcode must be installed either by the manufacturer as a part of the manufacturing process or by the supplier who receives products from other manufacturers before shipping to the end user. This includes the assignment of SGITN to the product by the manufacturer and / or the supplier. The manufacturer and /or the supplier must create the GS1 Datamatrix barcode, and program the content in the memory of the attached RFID tag. The label with the GS1 Datamatrix barcode must also be attached to the RFID tag, if applicable.

For some products, it may be appropriate to label the product only with the GS1 Datamatrix barcode. If a product is of a design and / or size that tagging with an RFID tag is not possible. Suppliers and system integrators of RFID and barcode solutions can assist in this context.

If the RFID tag should be used after installation for MRO purposes, it should be mounted in a way that it is readable without the need to disassemble the product.

Examples of placement:

- On doors, the frame is tagged as close to the upper corner as possible on the side where the door is hinged
- Windows are tagged in the frame as near the lower right corner (seen from the inside of the window) as possible

5.6 Security / Encryption of content in the RFID tag

EPC UHF Gen2V2 Air Interface Protocol is the latest version that provides enhanced security and encryption of information contained in the RFID tag.

- **Non-Traceable (Non-Traceable in the value chain)**

Non-Traceable functionality generally includes options for concealing parts of the contents of the various memory banks in the RFID tag, such as User Memory. In addition, the RFID reader's reading distance can be adjusted in the RFID reader software.

- **Securing that the product is authentic**

In several contexts, it is necessary to ensure that the product is authentic. Upon reading of the RFID tag's EPC code, it can be checked against the company's systems. This is very important for many industries.

Regarding security requirements that may be utilized in relation to the content of the RFID tag, a separate Guideline will be developed which describes functionality, applications and layout.

6. Data capture

6.1 Data capture using Datamatrix barcode readers

There are many suppliers of barcode readers on the market. The most important is to choose a barcode reader that is optimal in terms of the type of barcode to read, the size of the barcode, and the distance you want to read the barcode on.

6.1.1 Datamatrix reading equipment

To read a GS1 Datamatrix barcode, an image reader is required. This is an image capturing device, like a camera that captures the barcode and decodes the barcode content with software. Since the camera in these barcode readers is not of the same quality as the camera in a mobile phone. Therefore, a mobile phone cannot be used as a confirmation of the quality and whether a barcode is readable or not.

6.1.2 Reading distance

The readability of the barcode depends on the barcode size and the type of barcode reader you use. A rule of thumb is; The larger the barcode, the easier it is to read it from a distance.

6.2 Data capture using RFID readers

6.2.1 RFID readers and equipment

There are many different providers of RFID readers, RFID antennas and software, and UHF RFID readers are available that can be connected to smart phones and tablets via Bluetooth protocol.

There are a variety of portable RFID readers that also read barcodes, and there are stationary RFID readers that can be connected to multiple RFID antennas to cover a larger physical area. RFID readers can be built into portals, and they can be attached to fork lifts and trucks. There are also RFID readers with integrated antenna that can be mounted on the ceiling and cover a wide area. Such solutions are used, for example, in stores where this ensures dynamic control of the stock.

6.2.2 RFID Software Solutions

In connection with the implementation of SGTIN with GS1 Datamatrix barcode and EPC UHF RFID tags, RFID software solutions are required for the handling of RFID transactions retrieved from the RFID readers.

The individual supplier who deliver the products must use barcode and RFID solutions to identify the products. Identification must be linked to enterprise management system, often an ERP system. There are variations between the different ERP solutions. It is important to identify any limitations in the ERP system, to ensure that it is capable to support RFID and serialization. This is a basic requirement in this Guideline.

7. Testing RFID solutions

7.1 Readability of RFID tagged objects

Readability of RFID tagged objects is affected by several factors, the RFID chip, RFID antenna and encapsulation (the complete RFID tag). In addition, the environment in which the RFID tag will be read will be of importance to the reading quality. Environment that has a lot of metal objects can, for example, create unwanted reflections of the radio waves, so reading is difficult, or the wrong object is read.

It is common for installations of RFID equipment to consider various factors that may affect the environment for RFID solutions. It may be appropriate to shield areas and / or move objects from the reading that may affect the quality and rate of reading.

It is very important to carry out testing of the various solutions to document functionality. The quality of the RFID solutions today is very good and there are few errors associated with a properly tested installation.

EPC Gen2V2 RFID tags have been tested in connection with the development of the standard. Find more information in the Reference list in chapter 10.

7.2 Reading distance from RFID antennas to RFID tagged objects

GS1 EPC Gen2V2 UHF RFID tags have, through tests conducted by CISC Semiconductor, shown a significant improvement in several areas:

- Reading distance up to 20 m for standard solutions
- Opportunities for reading larger areas where products are tagged with RFID tags

8. Check list for manufacturers and suppliers.

In connection with the use of SGTIN and GS1 Datamatrix barcodes and / or GS1 EPC Gen2 RFID tags, there will be some primary activities that must be performed by manufacturers and suppliers of products. Subsequent check list describes some of the activities that must be performed in connection with identification and labelling / tagging.

Building, Construction and Facility Management – Checklist			
Identification and labelling / tagging of products with GS1 standards			
Number	Description	Comment	Priority
1	Application for GS1 Company Prefix (GS1 GCP) - GS1 Membership		1
2	Tagging with RFID tags and, if applicable labelling with GS1 Datamatrix barcode: Manufacturers and suppliers must ensure that they have the necessary technical equipment to tag the products with RFID tags and label with GS1 Datamatrix barcode.		2
3	The company's management system (ERP) must be able to be updated with SGTIN (serial number information). This may require new software solutions	If the manufacturer does not need serial number management or have this in other systems, this does not need to be in the ERP system. There are stand-alone systems that can communicate with the ERP system	2
4	Clarify which GS1 Application Identifiers (AI) to be used for storing data elements in EPC Gen2 UHF RFID tags and, if applicable GS1 Datamatrix barcode		1
5	Manufacturers and suppliers must inform partners about the intended use of GS1 standards for identification and labelling / tagging		3
6	Testing of reading distance from RFID tag to RFID reader, reading quality and reading environment for EPC Gen2 UHF RFID tagged products	Important to determine the optimal placement of tagging on the product	1

9. Information about GS1

GS1 Norway is a user-driven, not-for-profit organisation. GS1 Norway is a member of a global standardisation organisation, GS1 - which develops, maintains and offers open global standards for efficient product- and information flow. GS1 is represented in 112 countries and over 1 million companies use GS1 standards. GS1 Norway currently has more than 6300 members in several, diverse industries, and the member base is growing every year.

GS1 Norway's employees are experts in improving business processes based on GS1's global standards.

For the stakeholders in the value chain to communicate effectively with each other, they are required to use the same language. The GS1 system is such a common language, which can be understood across industries and borders. The GS1 system is the heart of our business - it streamlines the players' trade and logistics processes globally and locally.

10. References and glossary:

References

1. GS1 General Specifications - See gs1.no - Support/Andre-publikasjoner
2. EPC - Electronic Product Code - See gs1.no - Support/Datafangst/EPC/RFID
3. EPC RFID UHF Gen2 Air Interface Protocol. See gs1.no - Support/Datafangst/EPC/RFID
4. GS1 Norway - See gs1.no
5. GS1 GTIN Management Rules. See gs1.no - Support/Brukerveilledninger/GTIN administrasjon
6. Implementation Guide - Transport and Logistics. See gs1.no - Support/Datafangst/EPC/RFID
7. Standard for the identification and labelling of building and construction products. See gs1.no - Kom i gang/Bygge vare
8. RAIN RFID See rainrfid.org - RAIN RFID V2 Crypto Conformance and Performance Testing (GS1 is a member of RAIN)
9. RFID chips Class 0-5 - Classification of RFID chips - see epc-rfid.info/rfid/tags
10. Application for GS1 Company Prefix (GCP) - see gs1.no - Support/søknadsskjema GS1 Leverandørnummer
11. TDS - Tag Data Standard - See gs1.no - Support/Datafangst/EPC/RFID

Glossary

1. BAE – Building, Construction and Facility Management (Norwegian acronym)
2. BCFM – Building, Construction and Facility Management
3. EPC – Electronic Product Code
4. FDV – Management, Repair and Operations (Forvaltning, Drift og Vedlikehold) (Norwegian acronym)
5. GCP – GS1 Company Prefix
6. GTIN – Global Trade Item Number
7. GS1 AI – Application Identifier - Used to enter information about data elements
8. IFC GUID – Globally Unique Identifier
9. MRO – Management, Repair and Operations
10. RFID – Radio Frequency Identification
11. SGTIN – Serialized Global Trade Item Number
12. SKU – Stock Keeping Unit
13. TFM – Interdisciplinary Marking System (Tverrfaglig Merkesystem) (Norwegian acronym)
14. TID – Tag ID - Contains information from the chip manufacturer
15. UHF – Ultra High Frequency - Radio Frequency - 850 - 960 MHz (used for RFID tags)